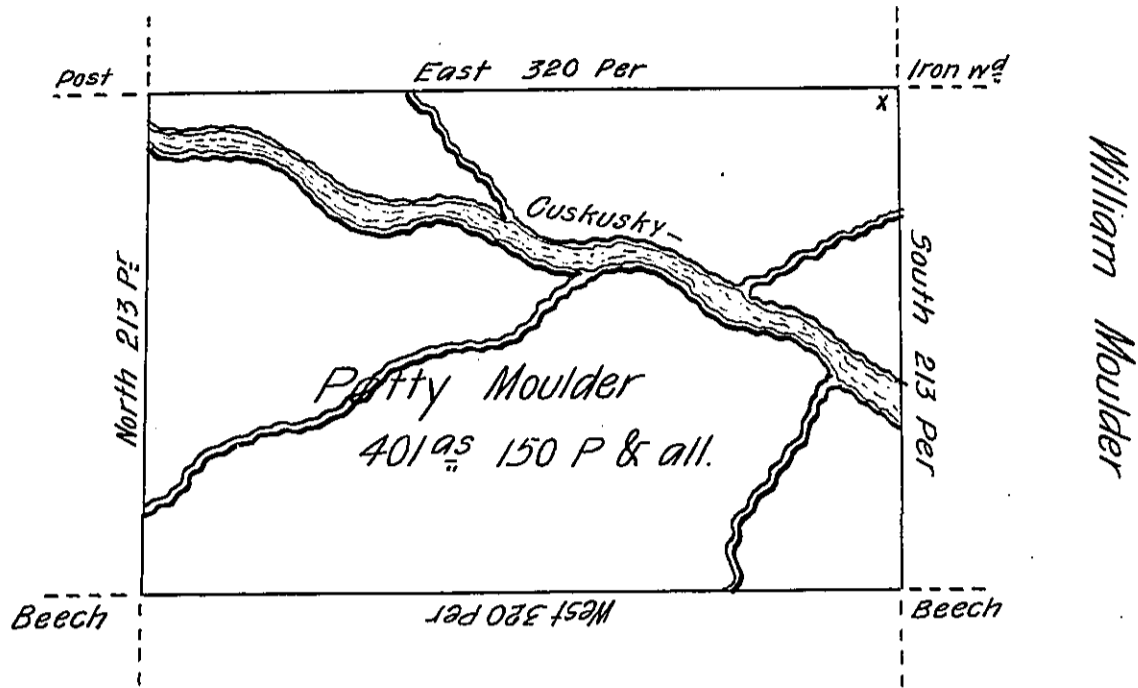


Hannah Nichol



William Moore.

Situate on the West side of French Creek in Allegheny County  
 Containing 401 95 150 Perches & allowance of Six Per Cent for Roads &c.  
 Surveyed the 4 day of June 1795. In Pursuance of a Warrant dated the  
 30th day of May 1792.

Wm Power Dy. S.

To Daniel Brodhead Esq.  
 Surveyor General.

IN TESTIMONY that the above is a copy of the original remaining on file in  
 the Department of Internal Affairs of Pennsylvania, made  
 conformably to an Act of Assembly approved the 16th day of  
 February, 1833, I have hereunto set my Hand and caused  
 the Seal of said Department to be affixed at Harrisburg,  
 this twent first day of December 1905.

*George D. Brown*  
 Secretary of Internal Affairs.